

Prepare and Apply

BONDING



**A guide to
prepare and apply
CRIMP COAT™
PRETREATMENT
WHEN PREPARING
WATER BASED
APPLICATIONS**

This method bulletin covers application of Crimp Coat™ Bonding or primer coating, preparing the application of water based coatings over existing water based or solvent based coatings.

Preparation of previous coatings are the critical steps toward successful completion. Read these suggested procedures carefully to determine what methods are appropriate at your locations.

READ THIS ENTIRE BULLETIN BEFORE PROCEEDING

For best performance, do not apply if a peeling or poorly bonded finishes exist or when heavy finish, soil build-up or other types of contamination exist.

Equipment / Supplies reminders:

___ Putty Knife ___ Rags ___ 5 gallon pails ___ Mop Buckets ___ 120 Grit Sanding Screen (1 per 1,000 sq. ft.) ___ Cotton Towels
___ 175 rpm Floor Machine with Driver ___ Scotch Brite Surface Preparation Pads (SPP) (1 per 1,000 sq. ft. ___ Extension Cords ___ Traction®
Cleaner ___ Push Broom ___ Mop-Bucket with fresh water ___ Garbage Bags for Clean-Up ___ Microfiber Drag Mop – 5' or 6'

STOP! Read this entire bulletin before proceeding
WATCH the Crimp Coat video tutorial at www.roll-on.com

APPLICATION/SPREAD RATES:

A. TRACTION® CLEANER diluted at 1:16 (8 oz/gal.)

B. CRIMP COAT™ Recoat Pretreatment spread rate is 800 to 1,000 square foot per gallon.



FAMILY OF FLOOR CARE PRODUCTS
From the Makers of Roll-on® Floor Finish
233 West Pipeline Road
Hurst, Texas 76053
817-571-2438
www.roll-on.com

This methods bulletin is to be used **only** by appropriately trained persons in conjunction with such training. IMPROPER USE OR OPERATION OF CHEMICALS OR EQUIPMENT POSES RISK OF PHYSICAL INJURY OR PROPERTY DAMAGE. Specific risks include, but are not limited to, burns, and improper application of chemical products (e.g. wrong product, wrong product combinations, improper applicator use, and improper curing.) Because successful and safe application is the responsibility and obligation of the trained applier, the manufacturer disclaims any and all warranties, express or implied, including warranties of MERCHANTABILITY or FITNESS OF PURPOSE. The manufacturer shall have no obligation except to replace repair, or pay for, in its sole discretion, any chemical product or equipment shown to be defective.

No person has authority to waive these disclaimers or make any representations or warranties on behalf of the manufacturer, except in writing signed by the manufacturer.

If you have not had training with the particular product or equipment discussed in these guidelines that you intend to use, please call: **Roll-on Floor Systems, LLC 817-571-2438** to discuss and arrange training.

CRIMP COAT™

Crimp Coat™ Floor Recoating Sealer allows Traction® Floor Coating and other water based systems to bond to most sports floors* without the need to “screen” existing coatings. Traditionally, screening an existing floor coating is required to ensure that the top coat will bond to the existing coating and will not peel or flake off of the floor over time. This screening step is labor intensive and expensive when factoring in time/labor and costs of the screens.

Crimp Coat™ saves time, labor & money and ensures that our Traction® Floor System will bond to most existing coatings* with no risk of peeling or flaking issues. Remove any marks on floor, clean the floor, rinse and apply one thin coat of Crimp Coat™.

* May not work on some epoxy-based sports floor coatings.



Crimp Coat™ Floor Preparation using a 175 RPM Floor Machine

Step 1: Dust mop floor to remove dust, sand and any debris. Use a putty knife to scrape up gum, labels and tape adhesive left on the floor. Remove any gum or adhesive residue. Rinse area with fresh water thoroughly.

Step 2: Clean and scrub the floor using a solution of Traction® diluted at 8 oz/gallon. Apply the Traction® solution to the floor with a mop and scrub the floor with 175 RPM floor machine and a blue or green pad (3M SPP Pads are also acceptable).



Note: Divide floor into smaller sections so the Traction® solution does not dry out before being picked-up. 250 square feet sections are suggested.

Pick-up spent solution after scrubbing with a wet-vac or an autoscrubber. Rinse with fresh water.

Step 3: Rinse Floor thoroughly with fresh water. Scrub floor with floor machine and red or blue pad. Pick-up rinse water with wet-vac. Allow floor to dry.

Step 4: Immediately before applying the “Crimp Coat™”, tack floor with clear water and cotton towels to remove any residual dust.

Step 5: Apply one thin coat of Crimp Coat™ Floor Recoat Sealer using a microfiber finish mop. Allow to dry one hour. If humidity is high, a slightly longer dry time may be required. Floor should be not be sticky or tacky.

Step 6: Apply water based Coating per manufacturer's instructions.

Go to www.roll-on.com - view selected videos.

Crimp Coat™ Floor Preparation using an Autoscrubber

Step 1: Dust mop floor to remove dust, sand and debris. Use a putty knife to scrape up gum, labels and tape adhesive left on the floor. Use **Mastery dL** to remove any gum or adhesive residue by applying a small amount to a cloth and rubbing the residue until it's removed. Rinse area with fresh water thoroughly.

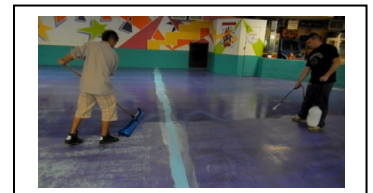
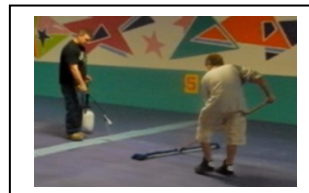
Step 2: Clean and scrub the floor using a solution of Traction® diluted at 8 oz/gallon in the solution tank of an autoscrubber using Blue or Green Pads (3M SPP Pads are also acceptable). Scrub floor two times in opposite directions for best results.



Step 3: Dispose of cleaning solution in solution tank of autoscrubber and fill with fresh water. Rinse floor thoroughly with fresh water using a red or blue pad on the autoscrubber. Rinse floor two times in opposite directions for best results. Allow floor to dry.

Step 4: Immediately, before applying the “Crimp Coat™”, tack floor with clear water and cotton towels to remove any residual dust.

Step 5: Apply one thin coat of Crimp Coat™ Floor Recoat Sealer using a microfiber finish mop. Allow to dry one hour. If humidity is high, a slightly longer dry time may be required. Floor should be not be sticky or tacky.



Application of Crimp Coat with sprayer and microfiber mop.

Note: Do not wait over 3 hours before applying next coating or you will be required to repeat steps 4 & 5.